



# PROSCAN XT

## Smallest and most powerful single-channel Ultrasonic flaw detector with 2-Axis encoding

The ProScan is a USB-powered single-channel high-speed acquisition system with advanced ultrasonic tooling and visualizations. It delivers high end performance while remaining user-friendly and cost effective.

### Features

- Full Project Stitching – Can run smaller scan sizes for increased productivity then stitch scans for complete inspection view
- DAC Implementation
- TOFD – Tools, Lateral Wave Straightening
- Reporting - Data Export with Grid Control
- Statistics – Find minimum thickness fast
- Data Skewing for angle beam transducers and HIC inspection

### Capabilities

- A-scan, B-scan, C-scan, 3D & 4D displays
- Performs Corrosion Mapping, TOFD, & SRGW
- Works with either automated or manual scanners

### Analysis

- Statistics, finds min. thickness with one mouse click
- Data exports to Excel with scan increment control
- Image smoothing and hide NRI features



C-Scan Stitching

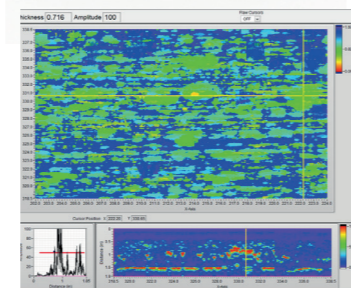
# PROSCAN 8

## Eight-channel Ultrasonic Flaw Detector

The Proscan8 takes all the features and benefits of the single channel ProScanXT but now gives you 8 channels. It allows you to collect up to 8 channels of data simultaneously which can increase production and allows you to view data in ways never achieved by other methods such as Phased Array or TOFD.

### Capabilities

- All features from ProScanXT but with 8 channels
- Data merging and stitching
- Real time multi-channel fixed angle acquisition



0-degree data showing hydrogen blisters

# LASER MAPPER

## External Corrosion Mapping Scanner (laser profilometry)

The Laser Mapper makes external corrosion mapping and laser profilometry practical when used in conjunction with our automated scanner systems. The laser beam intensity self adjusts based on variable surface conditions (dull, shiny or in direct sunlight) to obtain a depth reading without loss of data. Scanning speeds can be achieved at speeds up to 30" per second.

### Features

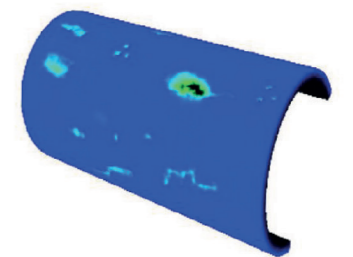
- **Fast** - scan up to 30 inches per second
- **Accurate** - to within +/- 0.002 inch
- **Compatible** - works with our existing line of scanners
- **Affordable** - costs less than an automated scanner
- **Portable** - laser sensor and controller weigh less than 2 pounds total
- **Auto-adjusting** laser beam for shiny or dull surfaces

### Laser Controller Specifications

- USB Type B
- Laser sensor connector: DB9 male
- Encoder feedback connector: DB9 female
- Voltage : 12vdc
- Current : 100mA

### Specifications

- Laser type : Red semi-conductor, wavelength 655nm,
- Laser output 220µW
- Class : FDA Class-1
- Size : 1.9" x 0.85" x 1.3"
- Weight : 120 grams
- Spot diameter: 200µm x 750µm (0.008" x 0.030")
- Repeatability 2µm (<0.001")
- Sensor water sealed to IP67 rating
- Temperature rating -10C to +50C (14 to 131F)
- Acquisition speed : 330µS
- Cable length : 100 ft.
- Sensor stand-off distance : 1" or 25mm
- Measurement range: 1" range (-5mm to 20mm)



Laser Mapper Surface Scanning



Laser Mapper Surface Scanning